

English Version

Aerospace series - Connectors, electrical, rectangular,  
modular - Operating temperature 175 °C continuous - Part  
026: Accessories for single module connector - Product  
standard

Série aérospatiale - Connecteurs électriques  
rectangulaires modulaires - Température d'utilisation  
175 °C continu - Partie 026: Accessoires pour  
connecteur mono-module - Norme de produit

Luft- und Raumfahrt - Elektrischer  
Rechtecksteckverbinder in modularer Bauweise -  
Betriebstemperatur 175 °C konstant - Teil 026:  
Endgehäuse für Steckverbinder für Einzelmodule -  
Produktnorm

This draft European Standard is submitted to CEN members for formal vote. It has been drawn up by the Technical Committee ASD-STAN.

If this draft becomes a European Standard, CEN members are bound to comply with the CEN/CENELEC Internal Regulations which stipulate the conditions for giving this European Standard the status of a national standard without any alteration.

This draft European Standard was established by CEN in three official versions (English, French, German). A version in any other language made by translation under the responsibility of a CEN member into its own language and notified to the CEN-CENELEC Management Centre has the same status as the official versions.

CEN members are the national standards bodies of Austria, Belgium, Bulgaria, Croatia, Cyprus, Czech Republic, Denmark, Estonia, Finland, France, Germany, Greece, Hungary, Iceland, Ireland, Italy, Latvia, Lithuania, Luxembourg, Malta, Netherlands, Norway, Poland, Portugal, Republic of North Macedonia, Romania, Serbia, Slovakia, Slovenia, Spain, Sweden, Switzerland, Türkiye and United Kingdom.

Recipients of this draft are invited to submit, with their comments, notification of any relevant patent rights of which they are aware and to provide supporting documentation.

**Warning :** This document is not a European Standard. It is distributed for review and comments. It is subject to change without notice and shall not be referred to as a European Standard.



EUROPEAN COMMITTEE FOR STANDARDIZATION  
COMITÉ EUROPÉEN DE NORMALISATION  
EUROPÄISCHES KOMITEE FÜR NORMUNG

CEN-CENELEC Management Centre: Rue de la Science 23, B-1040 Brussels

<b>Contents</b>	<b>Page</b>
<b>European foreword .....</b>	<b>3</b>
<b>1 Scope.....</b>	<b>4</b>
<b>2 Normative references.....</b>	<b>4</b>
<b>3 Terms and definitions .....</b>	<b>4</b>
<b>4 Required characteristics .....</b>	<b>4</b>
<b>4.1 Shielded accessories for single module connector .....</b>	<b>4</b>
<b>4.2 Unplated composite accessories for single module connector .....</b>	<b>13</b>
<b>4.3 Class .....</b>	<b>15</b>
<b>5 Designation .....</b>	<b>16</b>
<b>6 Marking .....</b>	<b>16</b>
<b>7 Technical specification .....</b>	<b>16</b>
<b>Bibliography .....</b>	<b>17</b>

## **European foreword**

This document (FprEN 4165-026:2023) has been prepared by the Aerospace and Defence Industries Association of Europe — Standardization (ASD-STAN).

This document is currently submitted to the Formal Vote.

This document will supersede EN 4165-026:2018.

FprEN 4165-026:2023 includes the following significant technical changes with respect to EN 4165-026:2018:

- adding of operating temperature to the scope;
- removal of some dimensions in Figure 2 “Accessory attachment system”;
- removal of Table 1 in Clause 4.3 “Class” and reference to EN 4165-002;
- update of Clause 6 “Marking”;
- editorial update of the document.

Any feedback and questions on this document should be directed to the users’ national standards body. A complete listing of these bodies can be found on the CEN website.

## 1 Scope

This document specifies accessories of single modules connectors according to EN 4165-024 and EN 4165-025 used in the family of rectangular electrical connectors, operating temperature 175 °C continuous.

## 2 Normative references

The following documents are referred to in the text in such a way that some or all of their content constitutes requirements of this document. For dated references, only the edition cited applies. For undated references, the latest edition of the referenced document (including any amendments) applies.

EN 3660-033, *Aerospace series - Cable outlet accessories for circular and rectangular electrical and optical connectors - Part 033: Stainless steel banding band, style Z, for attachment of individual and/or overall screens to cable outlets - Product standard*

EN 4165-001, *Aerospace series - Connectors, electrical, rectangular, modular - Operating temperature 175 °C continuous - Part 001: Technical specification*

EN 4165-002, *Aerospace series - Connectors, electrical, rectangular, modular - Operating temperature 175 °C continuous - Part 002: Specification of performance and contact arrangements*

## 3 Terms and definitions

For the purposes of this document, the terms and definitions given in EN 4165-001 apply.

ISO and IEC maintain terminology databases for use in standardization at the following addresses:

- ISO Online browsing platform: available at <https://www.iso.org/obp>
- IEC Electropedia: available at <https://www.electropedia.org/>

## 4 Required characteristics

### 4.1 Shielded accessories for single module connector

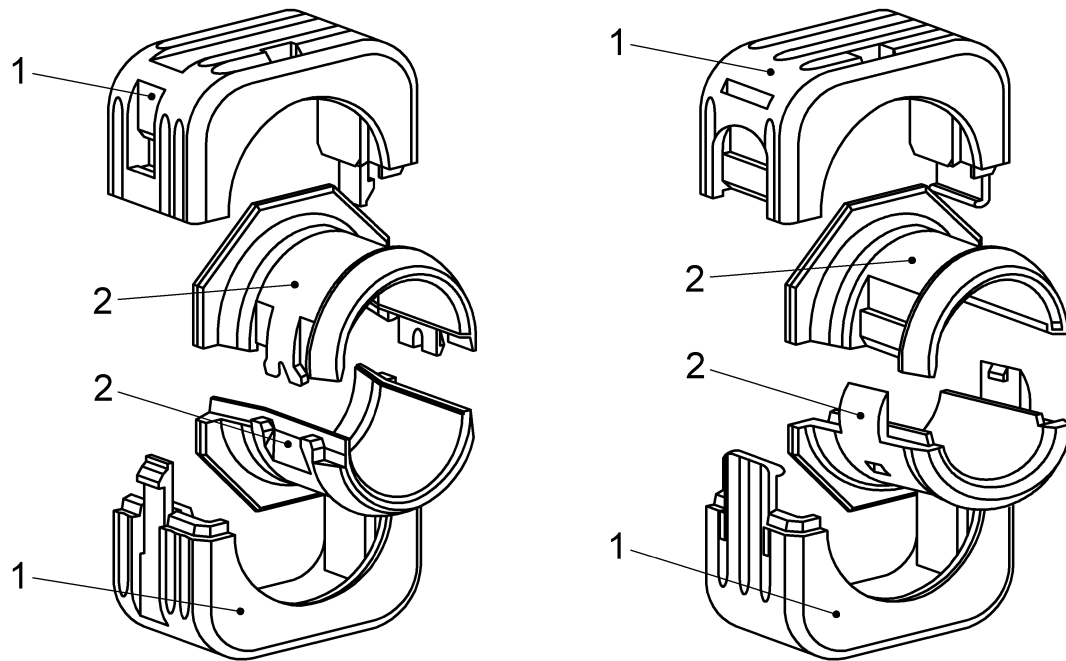
#### 4.1.1 General

The shielded accessories for the single module connector shall be according to attachment principle on Figure 1.

They shall always be delivered with an attachment system.

No accessory is standardized to fit the single-module connectors with contact size 8 module (according to EN 4165-002) – a new accessory shall be required for standardization if specific need exists.

Alternative design:

**Key**

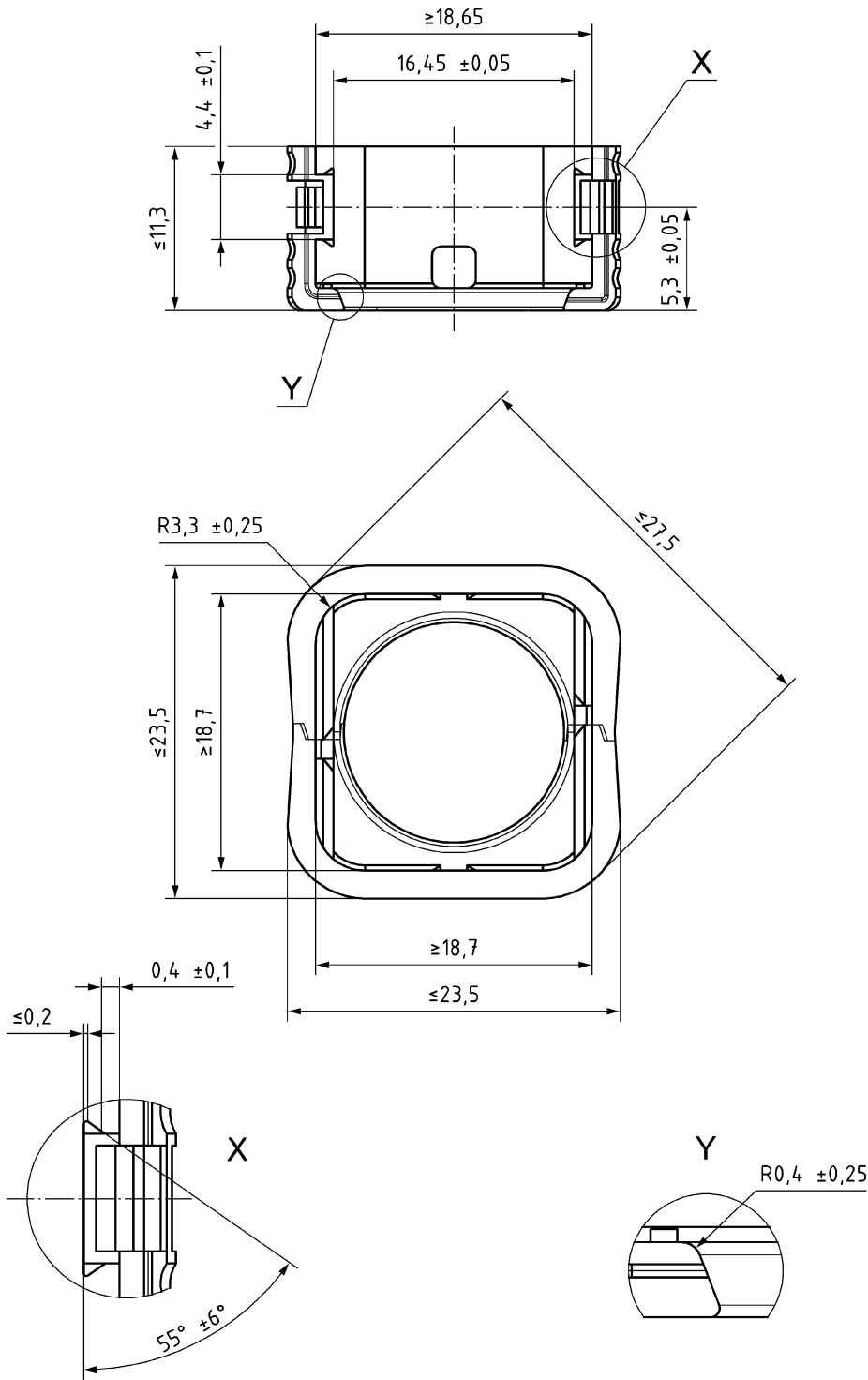
- 1 accessory attachment system consisting of half clips
- 2 accessory system consisting of two half sections permitting the termination of shielding using EN 3660-033 banding strap or equivalent

In case of 45° and 90° accessories, numbering system permit to give indication of angular position of the accessory.

**Figure 1 — Accessory assembly**

The accessory attachment system shall be according to Figure 2.

Dimensions in millimetres



**Key**

- X Detail X (in larger scale)
- Y Detail Y (in larger scale)

**Figure 2 — Accessory attachment system**