

# ILNAS

Institut luxembourgeois de la normalisation  
de l'accréditation, de la sécurité et qualité  
des produits et services

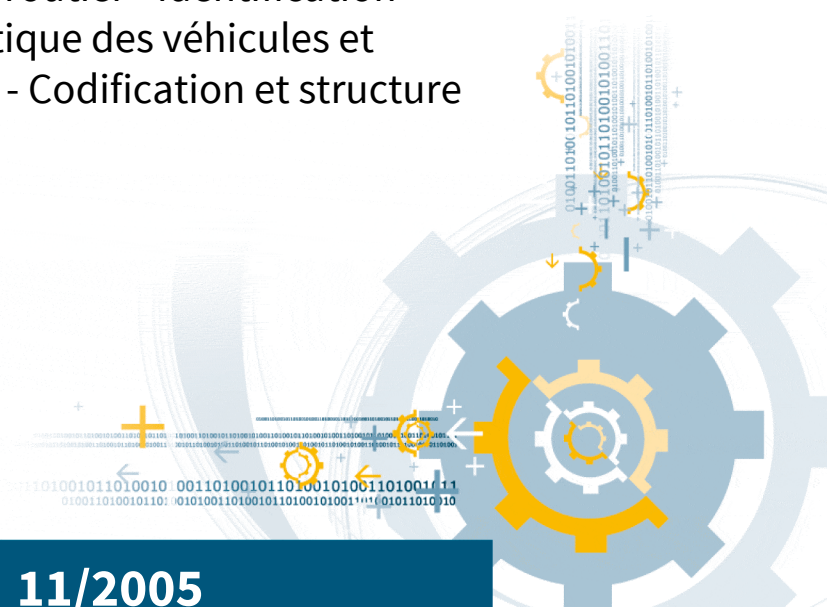
## ILNAS-EN ISO 14816:2005

### **Road transport and traffic telematics - Automatic vehicle and equipment identification - Numbering and data structure (ISO 14816:2005)**

Telematik für den Straßenverkehr und  
Transport - Automatische Identifizierung  
von Fahrzeugen und Geräten -  
Nummerierungs- und Datenstruktur (ISO

Télématique de la circulation et du  
transport routier - Identification  
automatique des véhicules et  
équipements - Codification et structure

11/2005



## National Foreword

This European Standard EN ISO 14816:2005 was adopted as Luxembourgish Standard ILNAS-EN ISO 14816:2005.

Every interested party, which is member of an organization based in Luxembourg, can participate for FREE in the development of Luxembourgish (ILNAS), European (CEN, CENELEC) and International (ISO, IEC) standards:

- Participate in the design of standards
- Foresee future developments
- Participate in technical committee meetings

<https://portail-qualite.public.lu/fr/normes-normalisation/participer-normalisation.html>

### **THIS PUBLICATION IS COPYRIGHT PROTECTED**

Nothing from this publication may be reproduced or utilized in any form or by any mean - electronic, mechanical, photocopying or any other data carries without prior permission!

ILNAS-EN ISO 14816:2005

EUROPEAN STANDARD **EN ISO 14816**  
NORME EUROPÉENNE  
EUROPÄISCHE NORM

November 2005

---

ICS 03.220.20; 35.240.60

Supersedes ENV ISO 14816:2000

English Version

Road transport and traffic telematics - Automatic vehicle and  
equipment identification - Numbering and data structure (ISO  
14816:2005)

Télématique de la circulation et du transport routier -  
Identification automatique des véhicules et équipements -  
Codification et structure des données (ISO 14816:2005)

Telematik für den Straßenverkehr und Transport -  
Automatische Identifizierung von Fahrzeugen und Geräten  
- Nummerierung und Datenstrukturen (ISO 14816:2005)

This European Standard was approved by CEN on 28 October 2005.

CEN members are bound to comply with the CEN/CENELEC Internal Regulations which stipulate the conditions for giving this European Standard the status of a national standard without any alteration. Up-to-date lists and bibliographical references concerning such national standards may be obtained on application to the Central Secretariat or to any CEN member.

This European Standard exists in three official versions (English, French, German). A version in any other language made by translation under the responsibility of a CEN member into its own language and notified to the Central Secretariat has the same status as the official versions.

CEN members are the national standards bodies of Austria, Belgium, Cyprus, Czech Republic, Denmark, Estonia, Finland, France, Germany, Greece, Hungary, Iceland, Ireland, Italy, Latvia, Lithuania, Luxembourg, Malta, Netherlands, Norway, Poland, Portugal, Slovakia, Slovenia, Spain, Sweden, Switzerland and United Kingdom.



EUROPEAN COMMITTEE FOR STANDARDIZATION  
COMITÉ EUROPÉEN DE NORMALISATION  
EUROPÄISCHES KOMITEE FÜR NORMUNG

Management Centre: rue de Stassart, 36 B-1050 Brussels

---

**EN ISO 14816:2005 (E)**

## **Foreword**

This document (EN ISO 14816:2005) has been prepared by Technical Committee CEN/TC 278 "Road transport and traffic telematics", the secretariat of which is held by NEN, in collaboration with Technical Committee ISO/TC 204 "Transport information and control systems".

This European Standard shall be given the status of a national standard, either by publication of an identical text or by endorsement, at the latest by May 2006, and conflicting national standards shall be withdrawn at the latest by May 2006

This document supersedes EN ISO 14816:2000.

According to the CEN/CENELEC Internal Regulations, the national standards organizations of the following countries are bound to implement this European Standard: Austria, Belgium, Cyprus, Czech Republic, Denmark, Estonia, Finland, France, Germany, Greece, Hungary, Iceland, Ireland, Italy, Latvia, Lithuania, Luxembourg, Malta, Netherlands, Norway, Poland, Portugal, Slovakia, Slovenia, Spain, Sweden, Switzerland and United Kingdom.

ILNAS-EN ISO 14816:2005  
**INTERNATIONAL  
STANDARD**

**ISO  
14816**

First edition  
2005-11-01

---

---

**Road transport and traffic telematics —  
Automatic vehicle and equipment  
identification — Numbering and data  
structure**

*Télématique de la circulation et du transport routier — Identification  
automatique des véhicules et équipements — Codification et structure  
des données*



**PDF disclaimer**

This PDF file may contain embedded typefaces. In accordance with Adobe's licensing policy, this file may be printed or viewed but shall not be edited unless the typefaces which are embedded are licensed to and installed on the computer performing the editing. In downloading this file, parties accept therein the responsibility of not infringing Adobe's licensing policy. The ISO Central Secretariat accepts no liability in this area.

Adobe is a trademark of Adobe Systems Incorporated.

Details of the software products used to create this PDF file can be found in the General Info relative to the file; the PDF-creation parameters were optimized for printing. Every care has been taken to ensure that the file is suitable for use by ISO member bodies. In the unlikely event that a problem relating to it is found, please inform the Central Secretariat at the address given below.

© ISO 2005

All rights reserved. Unless otherwise specified, no part of this publication may be reproduced or utilized in any form or by any means, electronic or mechanical, including photocopying and microfilm, without permission in writing from either ISO at the address below or ISO's member body in the country of the requester.

ISO copyright office  
Case postale 56 • CH-1211 Geneva 20  
Tel. + 41 22 749 01 11  
Fax + 41 22 749 09 47  
E-mail [copyright@iso.org](mailto:copyright@iso.org)  
Web [www.iso.org](http://www.iso.org)

Published in Switzerland

# Contents

Page

Foreword.....	iv
Introduction .....	v
<b>1 Scope .....</b>	<b>1</b>
<b>1.1 Overall numbering scheme.....</b>	<b>1</b>
<b>1.2 AVI/AEI numbering scheme.....</b>	<b>1</b>
<b>2 Normative references .....</b>	<b>2</b>
<b>3 Terms, definitions and notations .....</b>	<b>3</b>
<b>4 Requirements .....</b>	<b>3</b>
<b>4.1 Overall coding structure .....</b>	<b>3</b>
<b>4.2 General requirements.....</b>	<b>3</b>
<b>4.3 Data structure.....</b>	<b>4</b>
<b>4.4 Residency of data .....</b>	<b>4</b>
<b>4.5 Table of coding structure identifiers .....</b>	<b>5</b>
<b>4.6 Coding structure data elements (AVI/AEI applications) .....</b>	<b>5</b>
<b>4.7 CS1- AVI/AEI Numbering scheme .....</b>	<b>6</b>
<b>4.8 CS2-Manufacturers numbering .....</b>	<b>7</b>
<b>4.9 CS3 – Validity limitation .....</b>	<b>7</b>
<b>4.10 CS4 – Vehicle license number coding .....</b>	<b>10</b>
<b>4.11 CS5 – Vehicle Identification Number (VIN).....</b>	<b>11</b>
<b>4.12 CS6 – Reserved for CEN/ISO .....</b>	<b>12</b>
<b>4.13 CS7 – Freight container numbering.....</b>	<b>12</b>
<b>4.14 CS8 – Tax authority code.....</b>	<b>13</b>
<b>Annex A (normative) Management and general rules for the administration of coding structures CS1, CS2 and CS8.....</b>	<b>14</b>
<b>Annex B (normative) A summary of CS definitions.....</b>	<b>24</b>
<b>Annex C (informative) Examples on the use of AVI/AEI coding structures .....</b>	<b>28</b>
<b>Bibliography .....</b>	<b>35</b>

## Foreword

ISO (the International Organization for Standardization) is a worldwide federation of national standards bodies (ISO member bodies). The work of preparing International Standards is normally carried out through ISO technical committees. Each member body interested in a subject for which a technical committee has been established has the right to be represented on that committee. International organizations, governmental and non-governmental, in liaison with ISO, also take part in the work. ISO collaborates closely with the International Electrotechnical Commission (IEC) on all matters of electrotechnical standardization.

International Standards are drafted in accordance with the rules given in the ISO/IEC Directives, Part 2.

The main task of technical committees is to prepare International Standards. Draft International Standards adopted by the technical committees are circulated to the member bodies for voting. Publication as an International Standard requires approval by at least 75 % of the member bodies casting a vote.

Attention is drawn to the possibility that some of the elements of this document may be the subject of patent rights. ISO shall not be held responsible for identifying any or all such patent rights.

ISO 14816 was prepared by Technical Committee ISO/TC 204, *Intelligent transport systems*, in collaboration with Technical Committee CEN/TC 278, *Road transport and traffic telematics*.

This first edition cancels and replaces (ISO/TS 14816:2000).