
**Statistical methods for use in proficiency
testing by interlaboratory comparisons**

*Méthodes statistiques utilisées dans les essais d'aptitude par
comparaisons interlaboratoires*



PDF disclaimer

This PDF file may contain embedded typefaces. In accordance with Adobe's licensing policy, this file may be printed or viewed but shall not be edited unless the typefaces which are embedded are licensed to and installed on the computer performing the editing. In downloading this file, parties accept therein the responsibility of not infringing Adobe's licensing policy. The ISO Central Secretariat accepts no liability in this area.

Adobe is a trademark of Adobe Systems Incorporated.

Details of the software products used to create this PDF file can be found in the General Info relative to the file; the PDF-creation parameters were optimized for printing. Every care has been taken to ensure that the file is suitable for use by ISO member bodies. In the unlikely event that a problem relating to it is found, please inform the Central Secretariat at the address given below.

© ISO 2005

All rights reserved. Unless otherwise specified, no part of this publication may be reproduced or utilized in any form or by any means, electronic or mechanical, including photocopying and microfilm, without permission in writing from either ISO at the address below or ISO's member body in the country of the requester.

ISO copyright office
Case postale 56 • CH-1211 Geneva 20
Tel. + 41 22 749 01 11
Fax + 41 22 749 09 47
E-mail copyright@iso.org
Web www.iso.org

Published in Switzerland

Contents

Page

Foreword.....	v
0 Introduction	vi
0.1 The aims of proficiency testing.....	vi
0.2 ISO/IEC Guide 43.....	vi
1 Scope	1
2 Normative references	1
3 Terms and definitions	1
4 Statistical guidelines for the design and interpretation of proficiency tests	2
4.1 Action and warning signals	2
4.2 Guidelines for limiting the uncertainty of the assigned value	3
4.3 Guidelines for choosing the number of replicate measurements	3
4.4 Homogeneity and stability of samples	4
4.5 Operationally defined measurement methods	4
4.6 Reporting of data	5
4.7 Period of validity of the results of proficiency tests	5
5 Determination of the assigned value and its standard uncertainty	5
5.1 Choice of method of determining the assigned value	5
5.2 Formulation	5
5.3 Certified reference values	6
5.4 Reference values	7
5.5 Consensus values from expert laboratories.....	8
5.6 Consensus value from participants.....	9
5.7 Comparison of the assigned value	14
5.8 Missing values	14
6 Determining the standard deviation for proficiency assessment	15
6.1 Choice of method.....	15
6.2 Prescribed value	15
6.3 By perception	15
6.4 From a general model	17
6.5 From the results of a precision experiment.....	17
6.6 From data obtained in a round of a proficiency testing scheme.....	18
6.7 Comparison of precision values derived from a proficiency test with established values	18
7 Calculation of performance statistics.....	18
7.1 Estimates of laboratory bias.....	18
7.2 Percentage differences	22
7.3 Ranks and percentage ranks	24
7.4 <i>z</i>-scores.....	25
7.5 E_n numbers	27
7.6 z'-scores	28
7.7 Zeta-scores (ζ).....	29
7.8 E_z score	30
7.9 An example of the analysis of data when uncertainties are reported.....	30
7.10 Combined performance scores	35
8 Graphical methods for combining performance scores for several measurands from one round of a proficiency test.....	36
8.1 Application	36
8.2 Histograms of performance scores	36

8.3 Bar-plots of standardized laboratory biases 37

8.4 Bar-plots of standardized repeatability measurements 38

8.5 Youden Plot 38

8.6 Plots of repeatability standard deviations..... 45

8.7 Split samples 47

9 Graphical methods for combining performance scores over several rounds
of a proficiency testing scheme 52

9.1 Applications 52

9.2 Shewhart control chart for *z*-scores 52

9.3 Cusum control chart for *z*-scores 55

9.4 Plots of standardized laboratory biases against laboratory averages..... 56

9.5 Dot plot..... 57

Annex A (normative) Symbols 59

Annex B (normative) Homogeneity and stability checks of samples 60

Annex C (normative) Robust analysis..... 64

Bibliography 66

Foreword

ISO (the International Organization for Standardization) is a worldwide federation of national standards bodies (ISO member bodies). The work of preparing International Standards is normally carried out through ISO technical committees. Each member body interested in a subject for which a technical committee has been established has the right to be represented on that committee. International organizations, governmental and non-governmental, in liaison with ISO, also take part in the work. ISO collaborates closely with the International Electrotechnical Commission (IEC) on all matters of electrotechnical standardization.

International Standards are drafted in accordance with the rules given in the ISO/IEC Directives, Part 2.

The main task of technical committees is to prepare International Standards. Draft International Standards adopted by the technical committees are circulated to the member bodies for voting. Publication as an International Standard requires approval by at least 75 % of the member bodies casting a vote.

Attention is drawn to the possibility that some of the elements of this document may be the subject of patent rights. ISO shall not be held responsible for identifying any or all such patent rights.

ISO 13528 was prepared by Technical Committee ISO/TC 69, *Applications of statistical methods*, Subcommittee SC 6, *Measurement methods and results*.

0 Introduction

0.1 The aims of proficiency testing

Proficiency testing by interlaboratory comparisons is used to determine the performance of individual laboratories for specific tests or measurements, and to monitor the continuing performance of laboratories. The Introduction to ISO/IEC Guide 43-1:1997 should be consulted for a full exposition of the purposes of proficiency testing. In statistical language, the performance of laboratories can be described by three properties: laboratory bias, stability and repeatability. Laboratory bias and repeatability are defined in ISO 3534-1, ISO 3534-2 and ISO 5725-1. The stability of a laboratory's results is measured by intermediate precision as defined in ISO 5725-3.

Laboratory bias may be assessed by tests on reference materials, when these are available, using the procedure described in ISO 5725-4. Otherwise, proficiency testing by interlaboratory comparisons provides a generally available means of obtaining information about laboratory bias, and the use of data from proficiency tests to obtain estimates of laboratory bias is an important aspect of the analysis of such data. However, stability and repeatability will affect data obtained in proficiency tests, so that it is possible for a laboratory to obtain data in a round of a proficiency test which indicate bias that is actually caused by poor stability or poor repeatability. It is therefore important that these aspects of laboratory performance are assessed regularly.

Stability may be assessed by re-testing of retained samples, or by making regular measurements on a reference material or an in-house reference material (a stock of material established by a laboratory to use as private reference material). These techniques are described in ISO 5725-3. Stability may also be assessed by plotting estimates of laboratory bias derived from proficiency tests in control charts. This can provide information about laboratory performance that is not apparent from the examination of the results of individual rounds of proficiency testing schemes, and is another important aspect of the analysis of such data.

Data suitable for assessing repeatability may be generated by tests carried out in the normal course of the work of a laboratory, or by extra tests carried out within a laboratory specifically to assess repeatability. Consequently, the assessment of repeatability is not necessarily an important aspect of proficiency testing, although it is important that laboratories monitor their repeatability in some way. Repeatability may be assessed by plotting ranges of duplicate measurements on a control chart as described in ISO 5725-6.

The flowchart (Figure 1) illustrates how the techniques described in this International Standard are to be applied.

0.2 ISO/IEC Guide 43

ISO/IEC Guide 43-1 describes different types of proficiency testing schemes and gives guidance on the organization and design of proficiency testing schemes. ISO/IEC Guide 43-2 gives guidance on the selection and use of proficiency testing schemes by laboratory accreditation bodies. Those documents should be consulted for detailed information in those areas (the information is not duplicated here). ISO/IEC Guide 43-1 contains an annex that briefly describes the statistical methods that are used in proficiency testing schemes.

This International Standard is complementary to ISO/IEC Guide 43, providing detailed guidance that is lacking in that document on the use of statistical methods in proficiency testing. ISO 13528 is to a large extent based on a harmonized protocol for the proficiency testing of analytical laboratories ^[1], but is intended for use with all measurement methods.

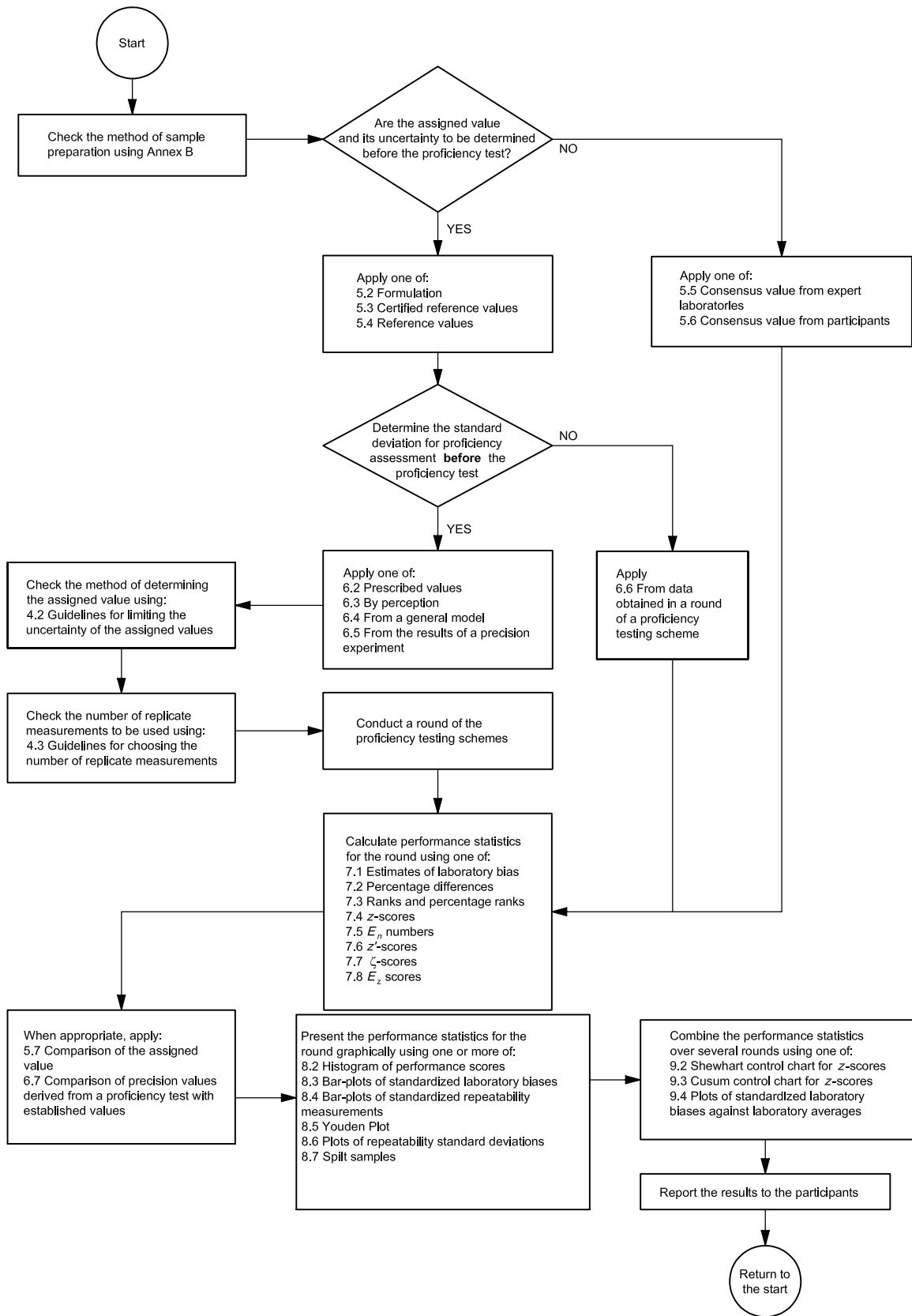


Figure 1 — Flowchart showing the activities requiring the use of statistical methods when operating a proficiency testing scheme